

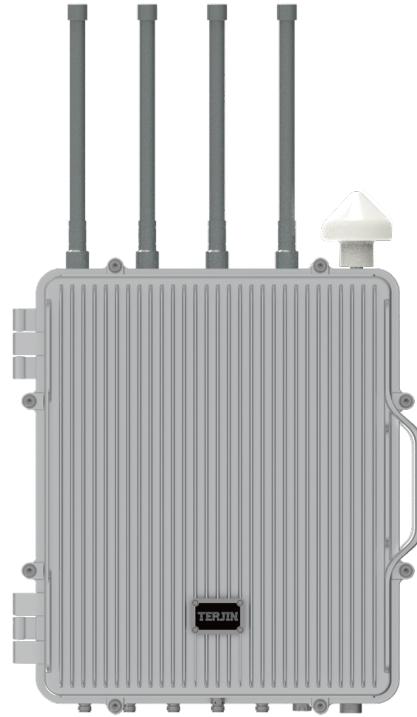
FD1

Drone Detection Equipment

Overview

FD1 is a stationary device for drone detection and location. Through radio spectrum big data analytics, it identifies drone model, S/N code, coordinates (longitude, latitude, altitude) as well as pilot coordinates.

It works independently offline or with multiple devices networking to cover a larger area. It can be interconnected with drone neutralization equipment such as radio jammers, GNSS spoofers etc.



Specifications

Work mode	Radio frequency
Detection target	Drone video transmission and control signals
Drone frequency	900MHz、1.2GHz、1.4GHz、2.4GHz、5.2GHz、5.8GHz
Detection range	1-10km (Varies depending on environment and drone model)
Swarm detection	~15 concurrently
Location error	~10m
Protection grade	IP65
Work temperature	-20°C~65°C
Dimension	513mm*462mm*187mm
Weight	~25kg

Scenarios



Drone threats mitigation for airports, critical industrial facilities, major event venues etc.

Features

Not just DJI

DJI, Autel as well as homemade, FPV, WiFi drone models

^[1] Location

Locates drones and pilots

^[2] Drone ID

Identifies drone S/N

^[3] Whitelist/Blacklist

Classifies "friend" and "foe"

^[4] Drone tracking

Tracks multiple drone flight trajectories simultaneously

Networking

Multiple devices can network to cover a larger area

Detection and neutralization linkage

Can interconnect with drone neutralization equipment

Full protection

Full-time, all-weather, no blind-zone

Note: Feature [1][2][3][4] only apply to certain drone models, for more details please refer to specs document.